

Toro Energy

ABOUT TORO ENERGY OF MISSISSIPPI

Toro Energy of Mississippi extracts gas out of the landfill, processes it and sends it to one end user who typically blends it with their main fuel gas inlet.

WHAT DOES TORO ENERGY OF MISSISSIPPI DO IF A LEAK OCCURS?

Our primary objective is to protect the public first, the environment second and equipment last.

MAINTAINING SAFETY AND INTEGRITY OF PIPELINES

Due to the extremely low pressure of the pipeline system, they are typically exempt from integrity management regulations.

HOW TO GET ADDITIONAL INFORMATION

For additional information about Toro Energy of Mississippi contact us directly.

EMERGENCY CONTACT:

1-800-994-1958

PRODUCTS/DOT GUIDEBOOK ID#/GUIDE#:

Landfill Gas 1971 115

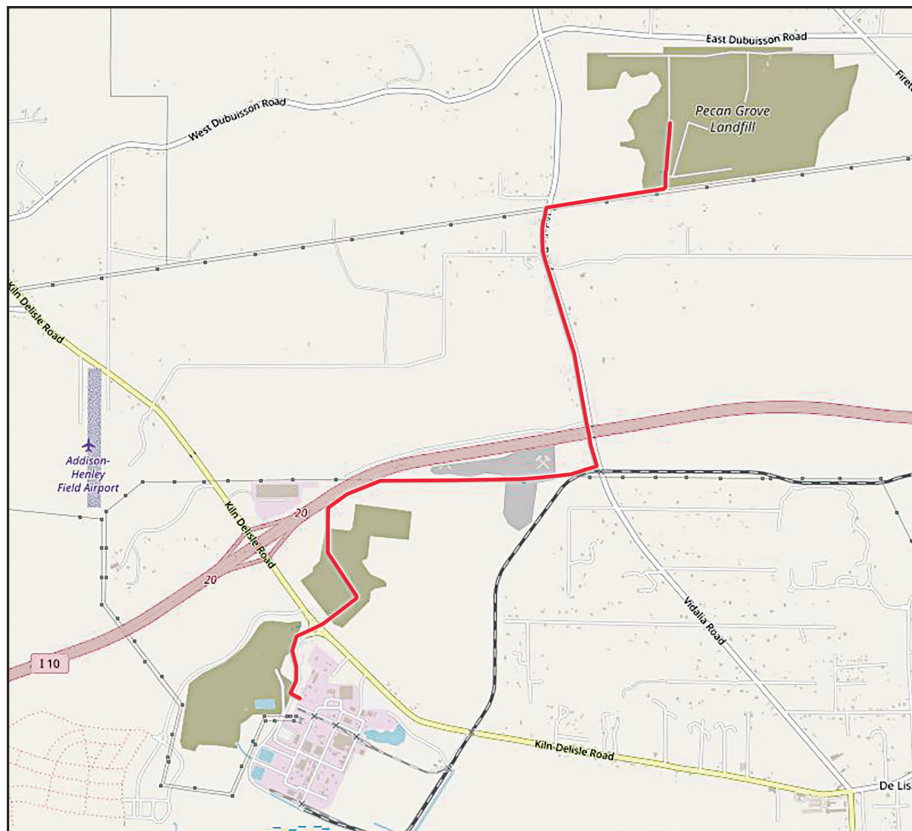
MISSISSIPPI COUNTIES OF OPERATION:

Harrison

Changes may occur. Contact the operator to discuss their pipeline systems and areas of operation.

PRODUCTS TRANSPORTED

PRODUCT	LEAK TYPE	VAPORS
LANDFILL GAS	Gas	Lighter than air and will generally rise and dissipate. May gather in a confined space and travel to a source of ignition.
HEALTH HAZARDS	Will be easily ignited by heat, sparks or flames and will form explosive mixtures with air. Vapors may cause dizziness or asphyxiation without warning and may be toxic if inhaled at high concentrations. Contact with gas or liquefied gas may cause burns, severe injury and/or frostbite.	



Base map courtesy of openstreetmap.org